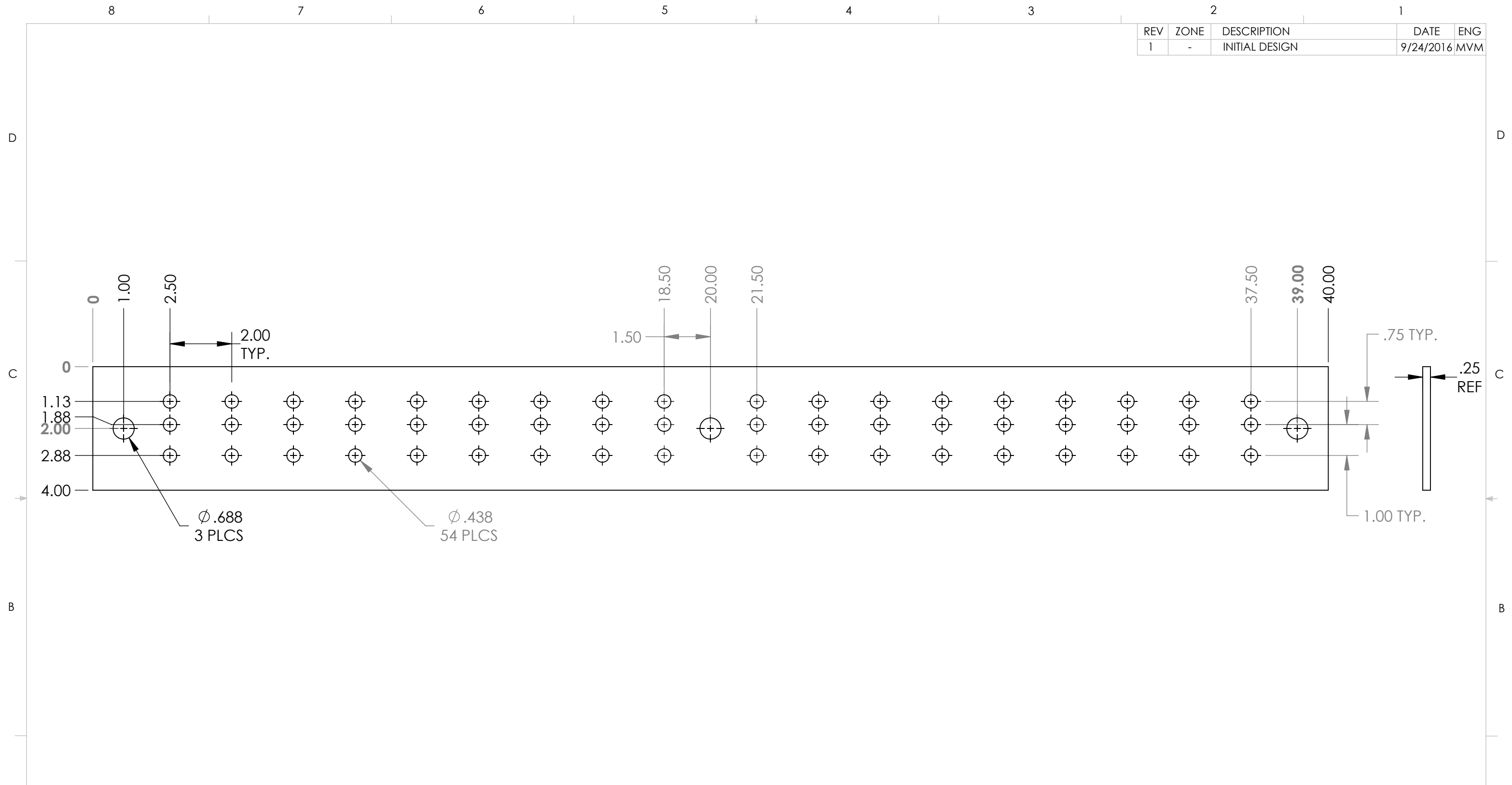

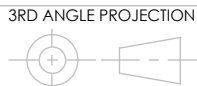


REV	ZONE	DESCRIPTION	DATE	ENG
1	-	INITIAL DESIGN	9/24/2016	MVM



**NOTES:**  
 BUSBAR MATERIAL: .25" THICK COPPER C110  
 BUSBAR FINISH: NONE  
 REMOVE SHARP EDGES & BURRS

**PROPRIETARY AND CONFIDENTIAL**  
 THE INFORMATION CONTAINED IN THIS DRAWING IS THE SOLE PROPERTY OF STORM POWER COMPONENTS. ANY REPRODUCTION IN PART OR AS A WHOLE WITHOUT THE WRITTEN PERMISSION OF STORM POWER COMPONENTS IS PROHIBITED.

UNLESS OTHERWISE SPECIFIED:		NAME	DATE		
DIMENSIONS ARE IN INCHES		DRAWN	M. MOLINA		9/24/2016
TOLERANCES:		CHECKED	-		-
ANGULAR: BEND ±1°		ENG APPR.			
ONE PLACE DECIMAL ±.1		MFG APPR.			
TWO PLACE DECIMAL ±.03		Q.A.			
THREE PLACE DECIMAL ±.005					
COMMENTS:		INTERPRET GEOMETRIC TOLERANCES PER: ASME Y14.5-1994			
SCGB-18 BUSBAR		3RD ANGLE PROJECTION			
MATERIAL		SIZE			
110 COPPER		B			
FINISH		SCALE: 1:3		DWG. NO. SCGB-18 REV 1	
-		WEIGHT: 12.12			
DO NOT SCALE DRAWING		SHEET 1 OF 1			